

TYPHOON Instant Marquee

Industrial Grade Aluminium Frame



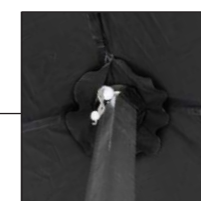
Patented pull-pin locking system offers easy leg height adjustment and leveling capability on uneven ground. Multiple settings for maximum height adjustment.



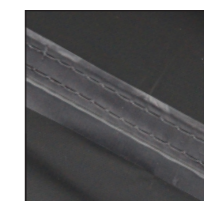
Central Pivot design ensures a lifetime of durability.



Heavy Duty Aluminium brackets compatible with the strength and quality of the rest of the frame.



Double layer of material at peak for extra wear resistance



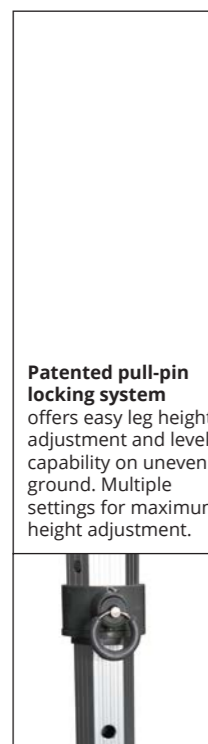
All seam points are double stitched for added strength and durability



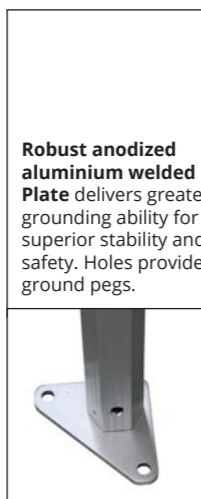
Advanced seam sealer strip applied to underside of all seams to ensure waterproofness

Proven Design Features

Based on the same ingeniously simple Duramarq concertina folding frame system, these superior Typhoon Instant Marquees offer all the benefits of the other models but with greatly enhanced strength and larger sizes.



Patented pull-pin locking system offers easy leg height adjustment and leveling capability on uneven ground. Multiple settings for maximum height adjustment.



Robust anodized aluminium welded Foot Plate delivers greater grounding ability for superior stability and safety. Holes provided for ground pegs.



Additional buckled straps are positioned on the roof midway between each leg to help secure the roof to the frame and keep it tense.



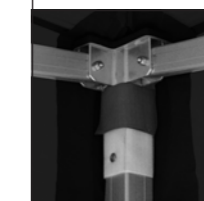
Twin internal ribs in all strut bars for increased strength.



Sturdy peak pole design compatible with the quality of the rest of the frames.



50mm wide horizontal velcro strip on lower inside edge of roof to allow sidewalls and/or raingutters to be attached/removed in seconds.



Double layer of material at corners to minimize wear and tear.



Sturdy D-Rings offer additional tie-down security.